



06/14



Das Original

Professional installation of a sealing flange with PTFE sealing ring and sender wheel

Audi | Seat | Škoda | VW

The crankcase is sealed on the flywheel side by sealing flange with PTFE sealing ring and sender wheel

Function of the flange seal module:

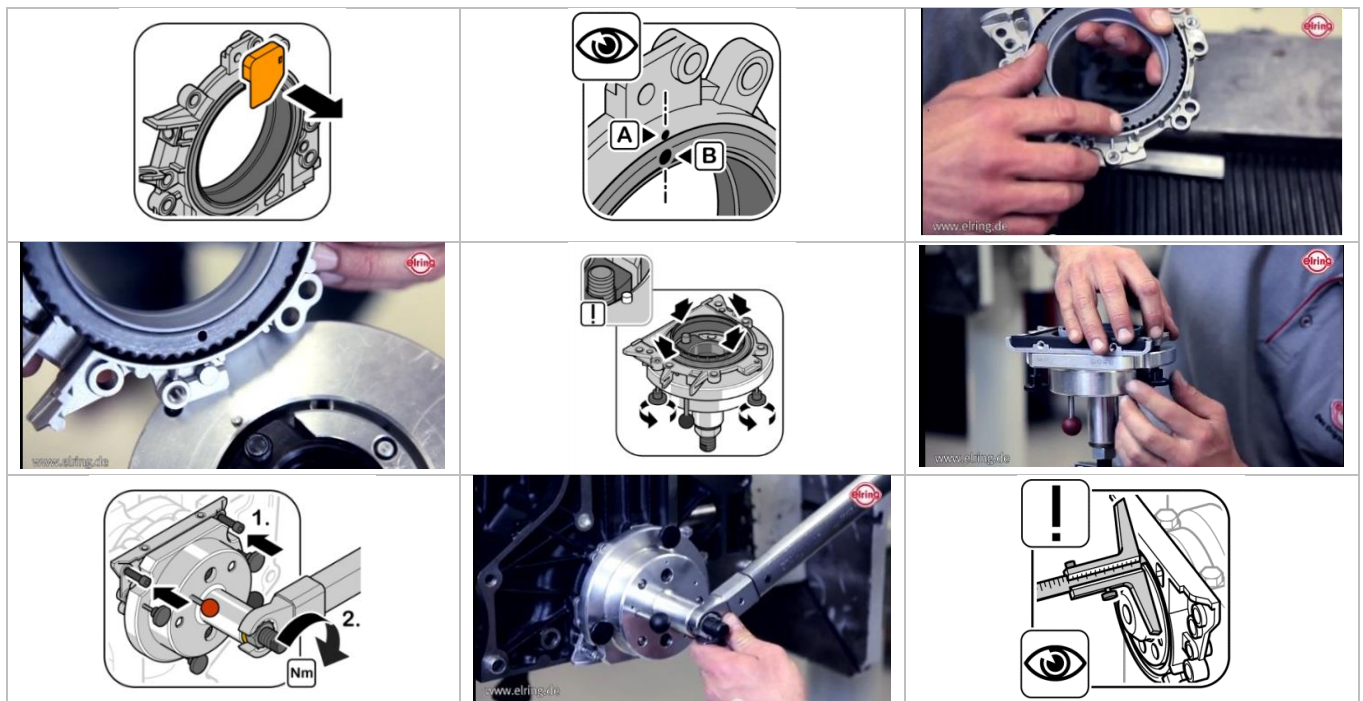
- Sealing function
- Capture engine speed
- Determine the exact position of the crankshaft
- Set the injection and ignition points with the engine control module

Problems if not removed or installed properly:

- Damage to the shaft
- Oil leakage
- Starting problems

Ensure the following when removing or installing:

- Install according to manufacturer's instructions
 - Use installation tool and observe the product information
- Check crankshaft for damage



For information about the corresponding vehicles and engines, consult the Eling Web Catalogue (E-KAT) at www.elring.de and TecDoc at www.tecdoc.net.

01/01